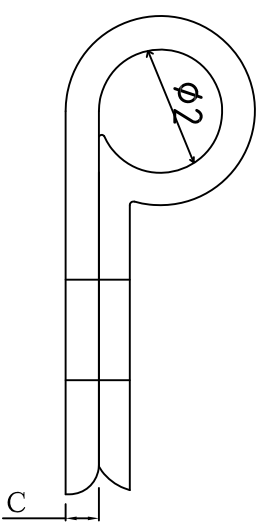
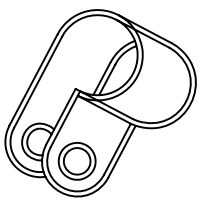
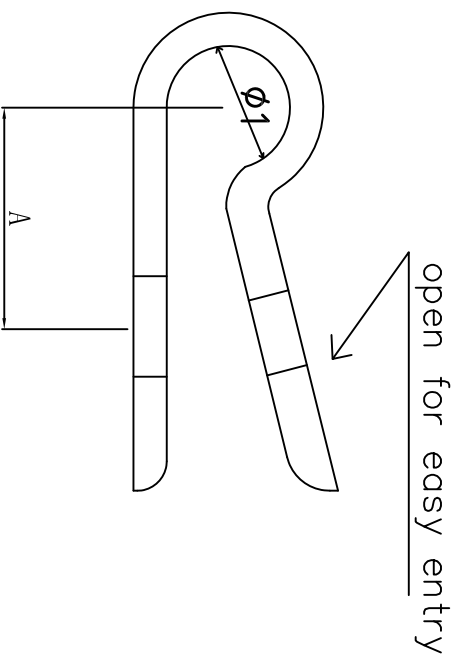
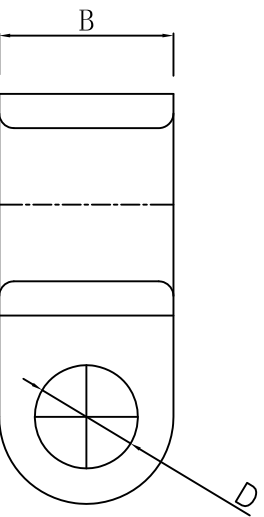


料号 Part NO.	品名 Parts Name	型号 Part NO.	尺寸Dimension				包装packing	相关认证
			$\phi 1$	$\phi 2$	A	B		
32-GCL-1/8	R型线夹	GCL-1/8	3.1	2.9	9.1	12.7	1.5	5.4 for M5



材质：符合UL94-2要求的尼龙66；  
颜色：白色（自然色），可定制；  
使用方法：将电置于固定扣内，再以螺丝固定。  
公差：±0.5

DIMENSION	TOLERANCES	NEW PART		CHK. BY		DATE
0.0	±0.5	A		APP. BY	REV.	UNIT
0.00				CHK. BY	DWG. NO.	mm

FRIST ANGLE PROJ	LTR.	REVISION RECORD	DWG. BY	CHK. BY	DATE	DWG. BY	CHK. BY	DWG. NO.	APP. BY	REV.	UNIT	mm
	A		<i>sullivan</i>	<i>zy wang</i>	<i>202108</i>	<i>liu liang</i>	<i>sullivan</i>		<i>wang zhiyan</i>			

未经许可不得修改和复印  
该知识产权属于技术质量部