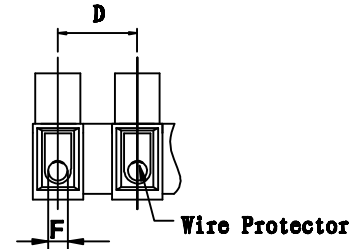
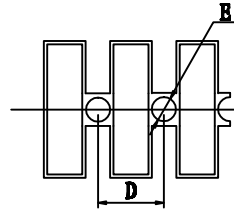
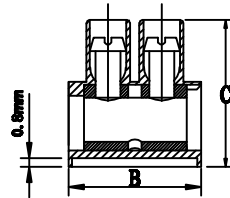
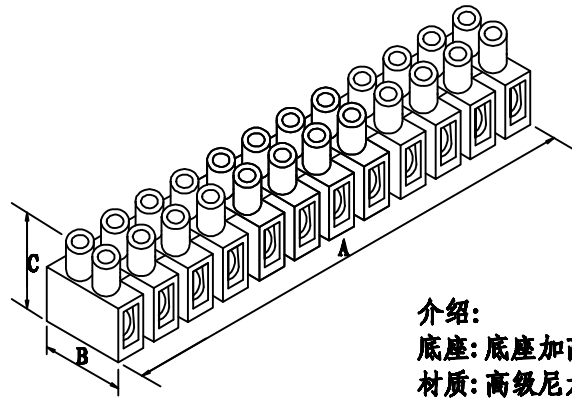


料号 Part NO.	品名 Parts Name	型号 Part NO.	适用电线/wrie Range		Screw 螺丝	尺寸 Dimensions (mm/in.)						Packing 包装	相关认证
			Cross-Sec.	AWG, Cu		A	B	C	D	E	F		
41-12HDSH	端子台(H型)	PA12 DS(环保铜)	6mm <sup>2</sup>	#22-#10 Sol Str	M3.5×7	140.7	23.80	19.00	12.00	3.90	4.2±0.1	40pcs/bag 400pcs/Ctn	VDE/FI/CQC/UL/CSA



**介绍:**

底座: 底座加高0.8mm.

材质: 高级尼龙66工程塑胶,

防火等级 UL 94v-2 阻燃等级.

温度: 105℃ (UL), -30℃ to 110℃ (IEC).

线座: 铜合金, 镀锌.

压片: 不锈钢材质, PA12 DS 附加弹片.

螺丝: 铁线, 镀锌.

剥线长度: 约 7.0mm/0.28in.

接线排数: 12排.

公差: 未标处为 ±1mm

**技术参数:**

VDE/FI/CQC: 500V, 41A, 6.0mm<sup>2</sup>

UL/CSA: 300V, 35A, #22-#10



未经许受权不得修改和复印  
该知识产权属于技术质量部

DIMENSION	TOLERANCES						DWG. BY	liu liang	UNIT	mm
0.0 0.00	±0.50						CHK. BY	sullivan	REV.	A
							APP. BY	wang zhiyan	DWG. NO.	HIWA/QR-JZ-41-12HDSH
FRIST ANGLE PROJ		A	NEW PART	sullivan	sp. group	20108				
		LTR.	REVISION RECORD	DWG. BY	CHK. BY	DATE				
苏州惠华电子科技有限公司										