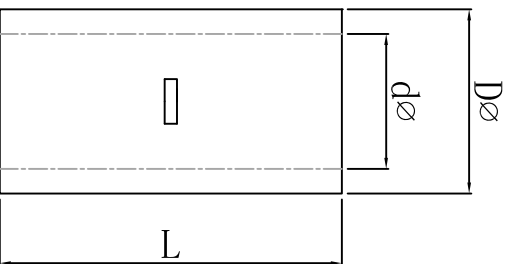
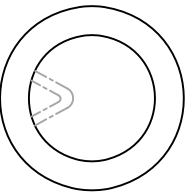


料号 material No.	品名 Parts Name	型号 Part NO.	导线截面 cable size (mm ²)	Dø	dø	L
40-BN 100	中间裸接头	BN 100	4/0 120mm ²	22	16.4	38.0



说明:
 材质: 紫铜, 镀白锌;
 颜色: 银白色



DIMENSION	TOLERANCES	FIRST ANGLE PROJ		NEW PART	DWG. BY	CHK. BY	DATE	DWG. BY	CHK. BY	REV.	UNIT
		LTR.	A								
0.0 0.00	±0.5				<i>wallian</i>	<i>zy.wang</i>	<i>202105</i>	<i>wang zhiyan</i>			mm
										A	HIMA/QR-JZ-40-BN 100

未经许可不得修改和复印
 该知识产权属于技术质量部