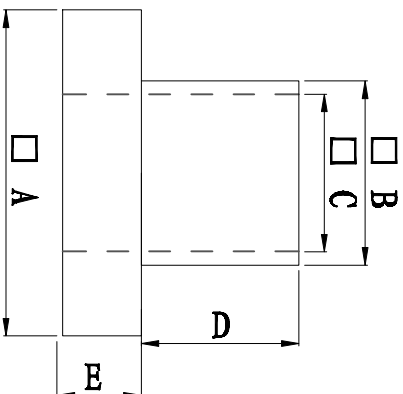
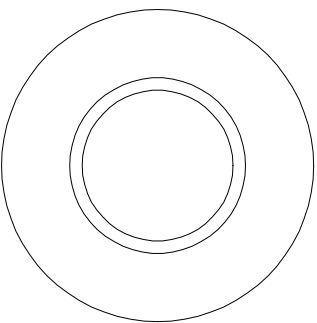


料号 Part NO.	品名 Parts Name	型号 Part NO.	尺寸Dimension					备注
			A (mm)	B (mm)	C (mm)	D (mm)	E (mm)	
69-TW-123	电晶体垫片	TW-123	8.2	4.65	4.05	3.6	0.5	



◆ MATERIAL: PA66 V2/PBT/

PA46/PPS/PA66 V0

◆ COLOR: NATURAL

◆ UNIT: mm

用途: 锁于电晶体上,

避免晶体外壳与散热片间造成短路。



未经许可不得修改和复印  
该知识产权属于技术质量部

DIMENSION		TOLERANCES		FIRST ANGLE PROJ			
0.0	0.00	±0.3		A	NEW PART	DATE	
				LTR.	REVISION RECORD	DWG. BY	CHK. BY
DWG. BY	<i>Lin liang</i>	UNIT	mm				
CHK. BY	<i>cailiuan</i>	REV.	A				
APP. BY	<i>wang shiyuan</i>	DWG. NO.	H1WA/OR-J2-69-TW-123				