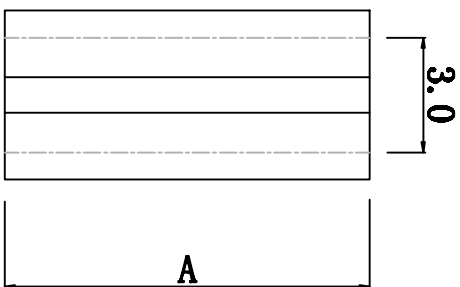
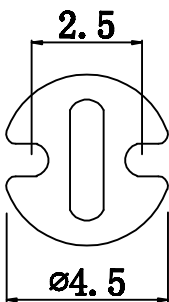


料号 Part NO.	品名 Parts Name	A	
34-LEDH-11.5	间隔柱 LEDH-11.5	11.5	



- ◆ MATERIAL: NYLON 66 (UL)
  - ◆ FLAME CLASS: 94V-2
  - ◆ COLOR: NATURAL
- 用途: 做为PC板与机板间之固定。  
公差要求: 未标注公差±0.3

DIMENSION	TOLERANCES	DWG. BY		UNIT	mm
0.0 0.00	±0.3	<i>liu liang</i>	<i>william</i>	REV.	A
FRIST ANGLE PROJ		APP. BY	<i>wang yiliang</i>	DWG. NO.	HIMA/QR-JZ-34-LEDH-11.5
	A	NEW PART	<i>william</i>	CHK. BY	<i>william</i>
	LTR.	REVISION RECORD	DWG. BY	CHK. BY	DATE
			<i>william</i>	<i>william</i>	<i>2012</i>



未经许可不得修改和复印  
该知识产权属于技术质量部;